

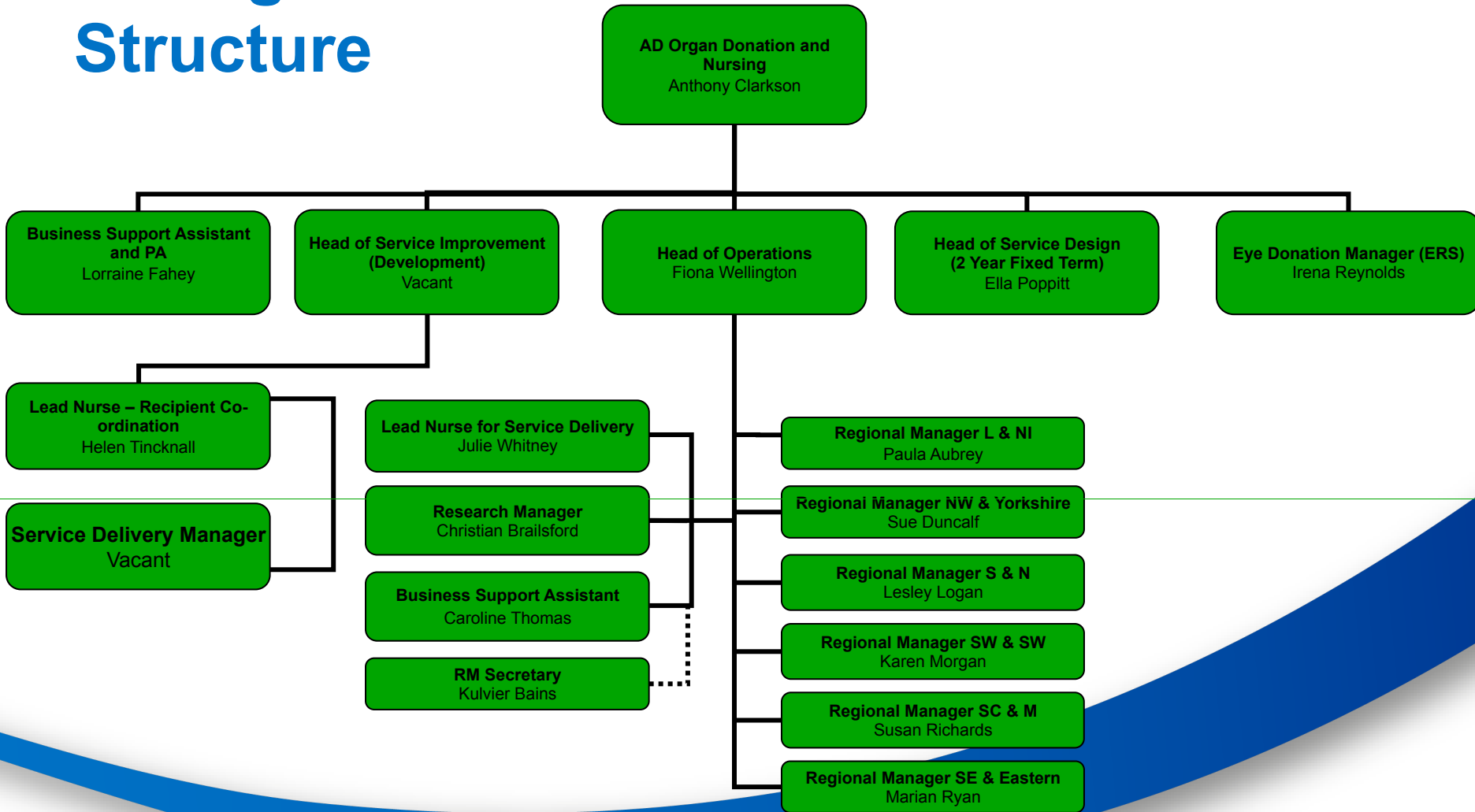
# Engaging Donor Hospitals

The Organ Donation Teams

28 April 2014



# Management Structure



# UK Regions

12 Regions

@300 hospitals



# Regional Structure

Region	TM	SN-OD	OM	Admin
London	4	32	1	3
Midlands	3	24	1	3
North West	3	24	1	2
South West	2	16	1	1
Eastern	2	16	1	1
South Wales	2	12	1	1
North Ireland	2	12	1	1
Northern	2	12	1	1
Scotland	2	18*	1	1
South East	2	16	1	1
South Central	2	16	1	1
Yorkshire	2	16	1	1



# Team Structure

## Team Managers

- Operational Management
  - Staff Management
  - Budget Management
  - Collaborative Networks
- Clinical Leadership
  - Donation process
  - Assessment of Clinical Competency

## Specialist Nurses – Organ Donation

- Donor facilitation
  - 24/7
    - Approach / Consent
    - Donor management
    - Retrieval
- Hospital Development
  - Embedded into Critical Care Units
    - 60% of working time
  - CLOD / DCC

## Office Manager

- Staff Management
  - Donor file management
  - Donor Follow-up
- Collaborative Network

## Administrator

- Donor file management
  - Donor Follow-up
- General support
  - Meeting organisation



**Thank you**

